

BOOK STORE SPACE FOR RENT

111 Railroad Ave. Cashmere, Wa 98815



The Side Street project is looking for the right creative & community focused tenant to rent an 800+/- sf space that has been designed to house a bookstore.

A truly unique storefront, housed in a historic building that is being renovated to bring an array of needed businesses & sense of community to the Wenatchee Valley.

If you have been looking for the perfect spot to open a cozy book shop, get in touch with us & schedule a tour.

*Photo depicts upstairs shelf space**

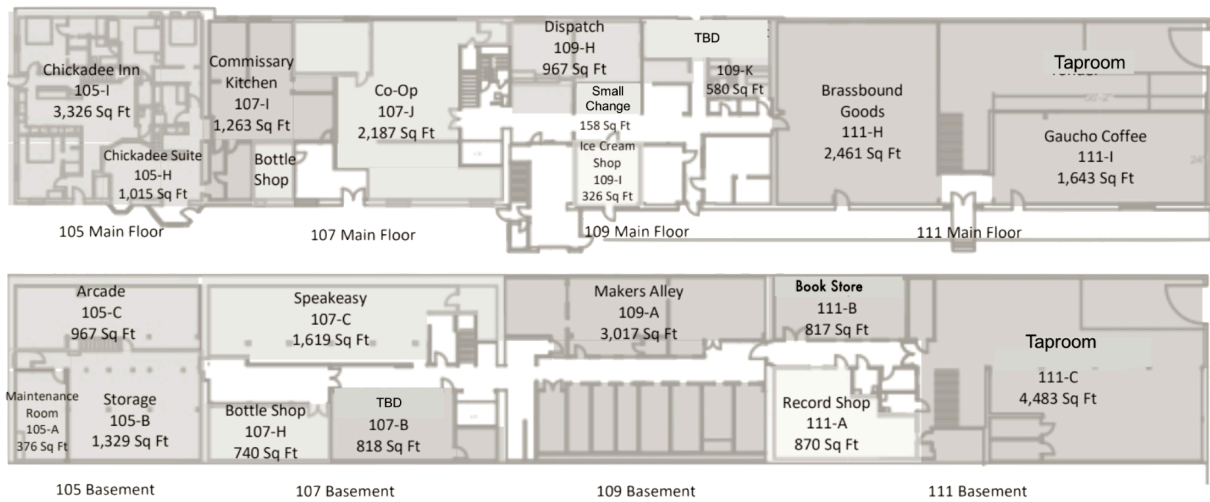
800 +/- SF @ \$1.50 SF + NNN	Interior storefront, basement level.
Adjoins Cider Taproom that will seat 100+, Mercantile, Coffee Shop, Artist Studios and Record store, set to open 2024.	-Part of The Side Street adaptive reuse project; bringing art, music, food & beverage + more to the Wenatchee Valley.
-Branding, merchandising and inventory management assistance on-site for the right tenant!	-The Side Street is a phased project that runs a full city block from 101-111 Railroad Ave.
-Includes bonus selling space upstairs in the main corridor, pictured.	-Space will be ready for tenant improvements & move-in summer 2024.

The Side Street Cashmere

WWW.SIDESTREETCASHMERE.COM

info@sidestreetcashmere.com

509-741-4493



We are on a mission to serve the Wenatchee Valley in new creative ways!

Our evolving block will be home to 20+ new locally run businesses, creating a much needed neighborhood hub of retail, art, music, food & beverage.

A place to connect with one another and enjoy our wonderful community.